

Economic Assistance Services and Programs for Assistance

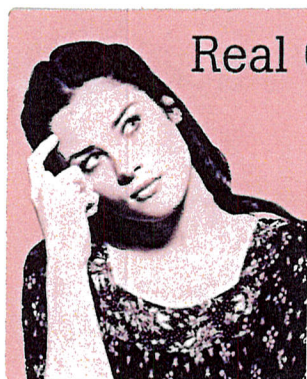
- **SNAP – Supplemental Nutrition Assistance Program**
 - (Formerly known as the Food Stamp Program). SNAP assists households with limited assets and income to buy the food they need for good health. Households qualify for SNAP benefits based on available household assets, income and certain expenses. If the household is eligible, SNAP benefits are placed on an Electronic Benefits Transfer (EBT) card for the household to buy food.
- **ADC – Aid to Dependent Children**
 - The ADC Program provides financial payments to dependent children age 18 or younger and eligible parents who meet financial eligibility requirements. Participation in Employment First may be required.
- **EMPLOYMENT FIRST**
 - Employment First is the name of Nebraska's welfare reform program. The goal of Employment First is to help families achieve economic self-sufficiency through training, education, and employment preparation. Employment First is designed to assist families who are receiving ADC transition from assistance to employment.
- **EMERGENCY ASSISTANCE**
 - Emergency Assistance is provided to needy families with minor children in situations where other resources are not available due to a crisis situation. Examples of situations for which assistance may be available are imminent evictions, loss of utility service, or exhaustion of food supplies.
- **CHILD CARE**
 - Assists eligible parents and caretakers pay for the cost of child care while they work, attend employment related training or school, or participate in another approved activity. Based on their income, the family may be responsible to pay a portion of the cost.
- **LIHEAP – Low Income Energy Assistance Program**
 - LIHEAP assists low income households in meeting energy costs. Benefits are based on family size, fuel type, and financial eligibility.
- **AABD – Aid to the Aged Blind and Disabled**
 - Provides financial assistance to persons in need age 65 or older, OR age 64 and younger and determined blind or disabled.
- **SDP – State Disability Program**
 - Provides financial and/or medical assistance to persons who have a disability expected to last at least six months, but less than 12 months. Persons who do not qualify for Supplemental Security Income through Social Security, due to the duration of the disability, may qualify for State Disability Program
- **SSAD – Social Services for the Aged and Disabled**
 - Provides in home assistance to qualified Aged, Blind or Disabled persons to help them maintain in their home. Examples of services may include Chore Services, Home Delivered Meals, Respite Care, Transportation.
- **REFUGEE RESETTLEMENT**
 - Provides financial assistance to refugees/asylees who have been resettled in the United States and do not qualify for other programs. Assistance is limited to the first eight months as a refugee.

To Apply for Any of These Programs:

Printable paper applications found online at www.ACCESSNebraska.ne.gov

Electronic applications available at www.ACCESSNebraska.ne.gov

Call to request a paper application via mail or pick one up at any local DHHS office.



Real Questions, Real Concerns, Real People

We want to help!

Call the DHHS Helpline

Monday through Friday 8 a.m. - 5 p.m. Central Standard Time.

>> E-mail: DHHS.Helpline@nebraska.gov <<

Nebraska Department of Health and Human Services

DHHS Helpline:
(800) 254-4202

In Lincoln call:
(402) 471-6035

Department of Health & Human Services
DHHS
 NEBRASKA